

BEAULY TO INVERNSS CYCLE ROUTE

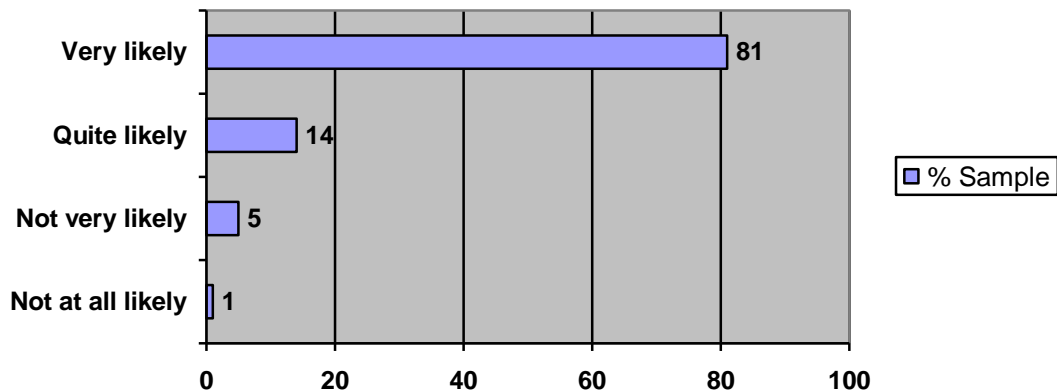
COMMUNITY SURVEY RESULTS - MAY 2009

(BASED ON 186 COMPLETED QUESTIONNAIRES)

(Note: some percentages do not sum to 100 due to rounding)

Figure 1: All respondents – How likely is it that you would use the path (or short sections of the path) for either cycling or walking?

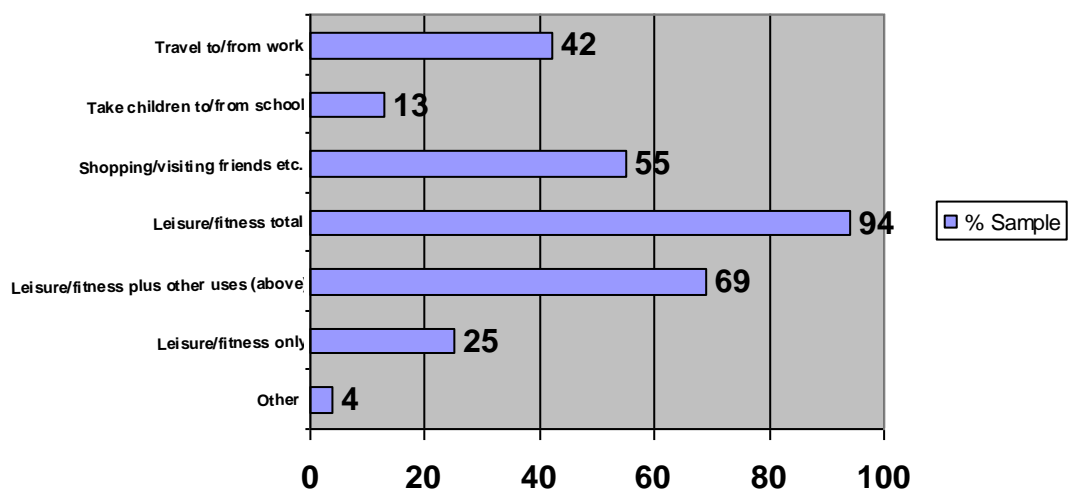
Base: 186



Source: Beauly to Inverness Cycle Path - Community Survey April 2009– q1

Figure 2: All respondents – Which of the following types of journeys would you use the path for?

Base: 186 (multicodes)

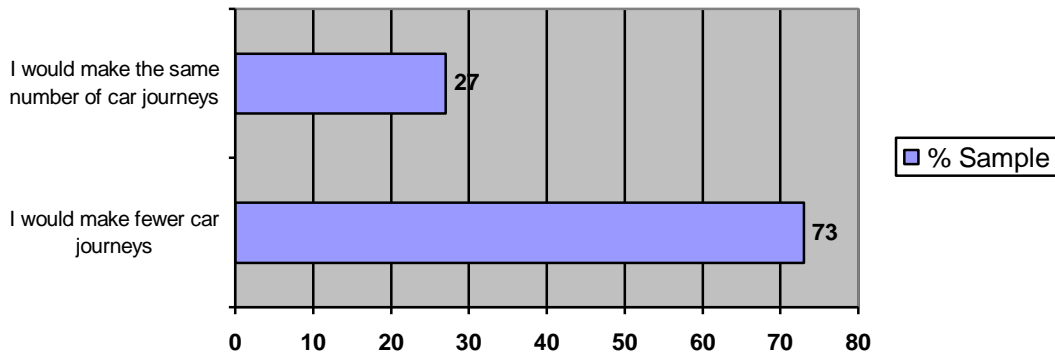


Source: Beauly to Inverness Cycle Path - Community Survey April 2009 – q2

Figure 3: All respondents – If the path existed, how would the number of car journeys you make each week on the A862 be affected?

Base: 186

Respondents estimate that they currently make 1,808 car journeys from their homes each week using the A862.



Source: Beaulieu to Inverness Cycle Path - Community Survey April 2009 – q3/4

Figure 4: All respondents – Likely impact of path on car miles travelled on the A862

Base: 148

1 mile= 1.6km

1000 kg= 1 metric tonne

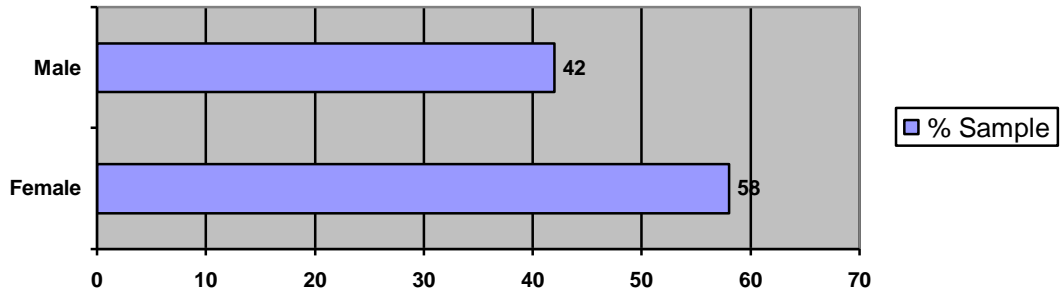
Car miles/km currently travelled each week by 186 respondents on the A862	16,950 miles/27,120km
If the cycle path existed, numbers of car miles/km which 186 respondents would continue to travel each week on the A862	11,436 miles/18,298km
Car miles/km saved each week by 148 respondents if cycle path existed	5,514 miles/8,822km
Weekly carbon savings by 186 respondents based on 2.4kg saved per 5 miles (formula used by Strathpeffer team – source unknown)	2,648kg/2.7 metric tonnes per week
Weekly carbon savings by 186 respondents based on 180g saved per 1km (Ged - Source: 'Valuing the Benefits of Cycling' - a report by SQW for Cycling England 2007)	1,588kg/1.6 metric tonnes per week

Source: Beaulieu to Inverness Cycle Path - Community Survey April 2009 – q5/6

Classification questions

Figure 5: All respondents – Gender

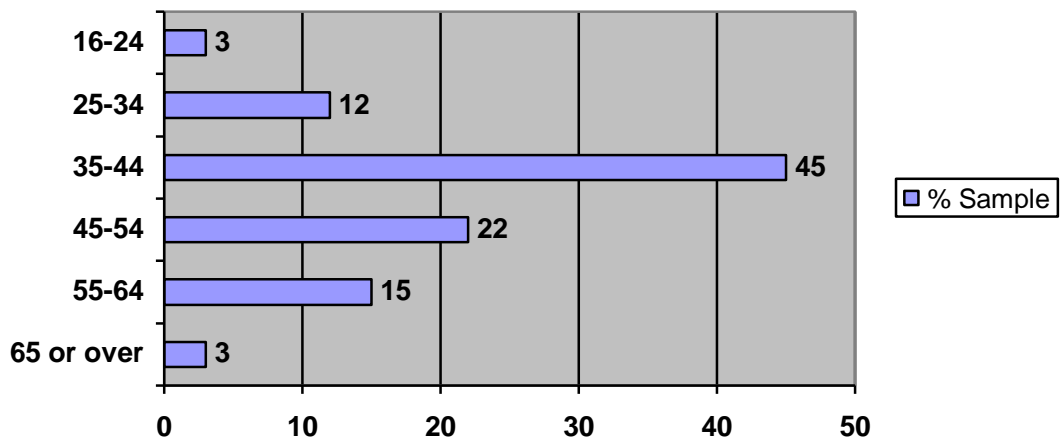
Base: 186



Source: Beaulieu to Inverness Cycle Path - Community Survey April 2009 – q7

Figure 6: All respondents – Age

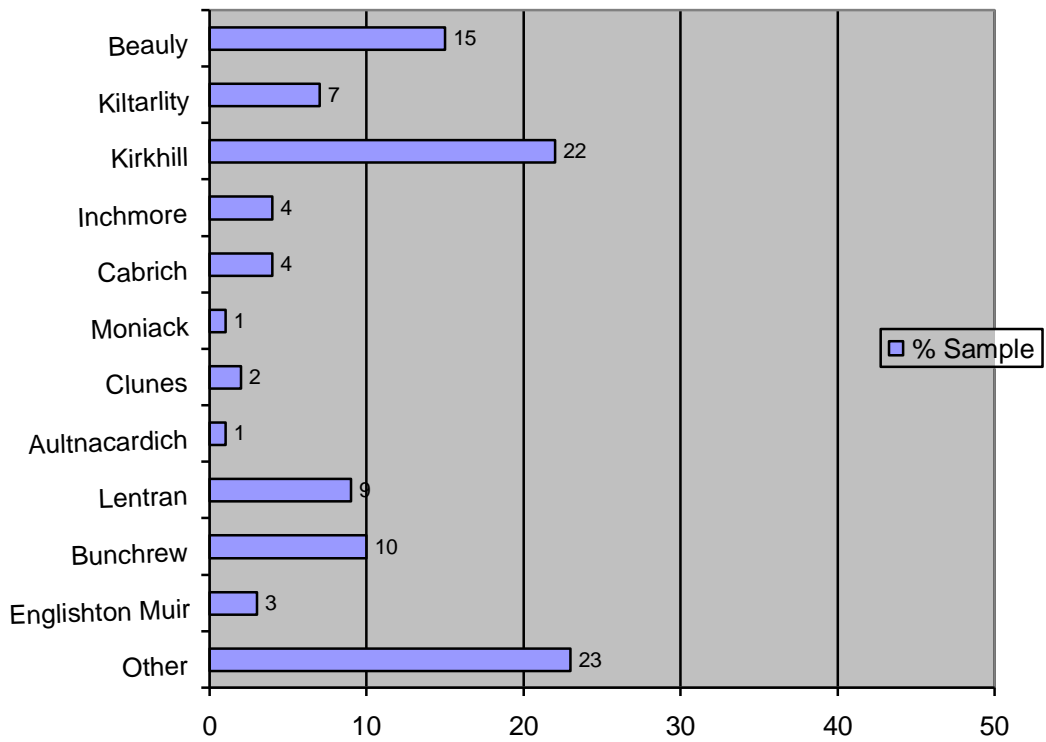
Base: 186



Source: Beaulieu to Inverness Cycle Path - Community Survey April 2009 – q8

Figure 7: All respondents – Residency

Base: 186



Source: Beaully to Inverness Cycle Path - Community Survey – q9